

Community engagement - 02.12.2025

Hove County Ground

South-West Stand Hospitality





1.0 Introduction

1.01 About us



Stuart Eatock

Managing Director,
ECE Architecture



Chris Barker

Managing Director,
ECE Planning



working alongside Sussex Cricket since 2018





1.0 Introduction

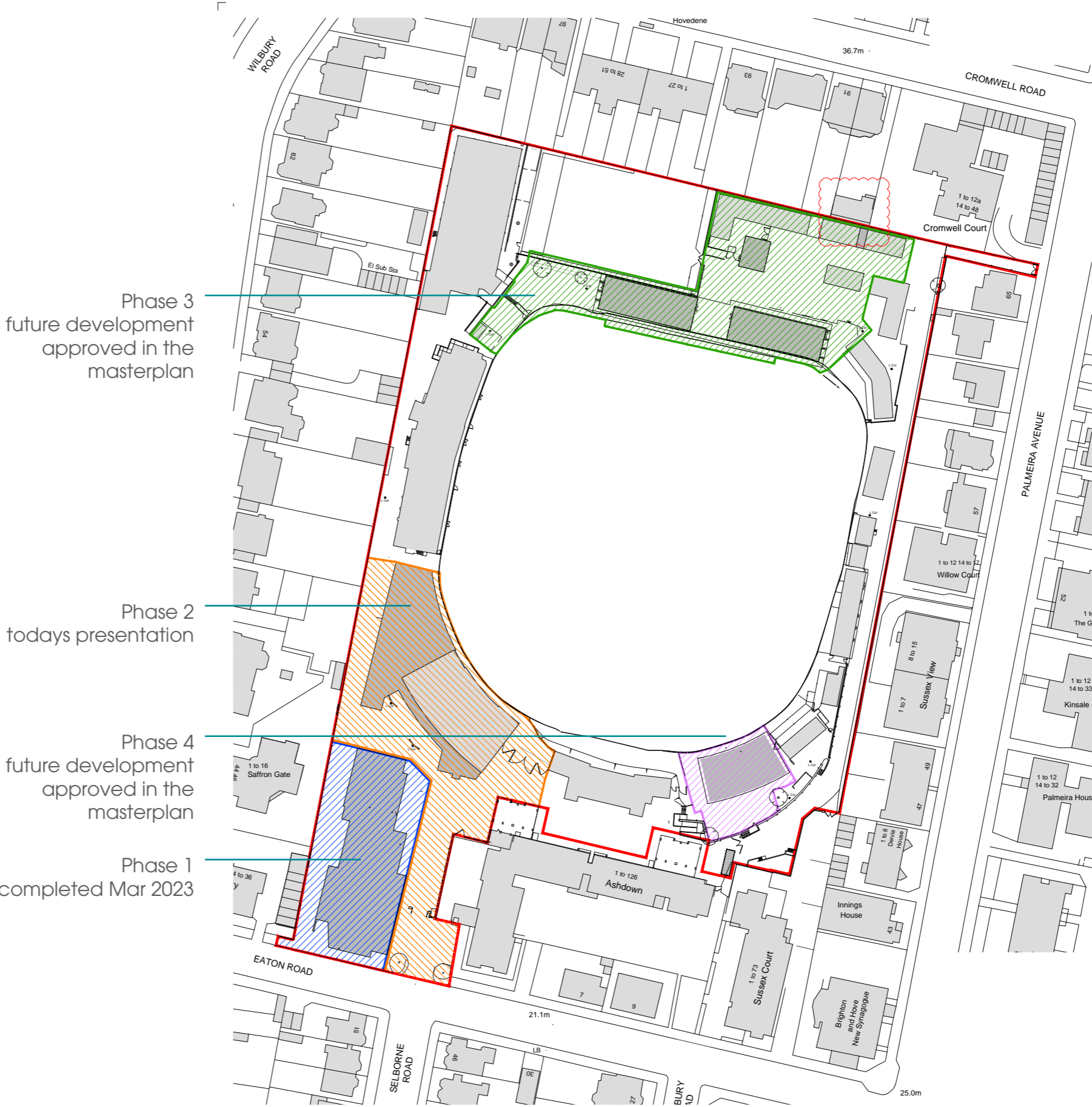
1.02 The site

The masterplan for the development at the County Cricket Ground in Hove was granted planning approval in August 2020.

Following completion of Phase 1 in March 2023, attention has turned to the delivery of Phase 2.

The economic environment and the hospitality needs of the club has changed greatly in that time, so a review of the Phase 2 plans was necessary.

In recent months we have been working with Sussex Cricket to refine these plans which we are presenting today.



2.0 Design amendments

2.01 Approved scheme

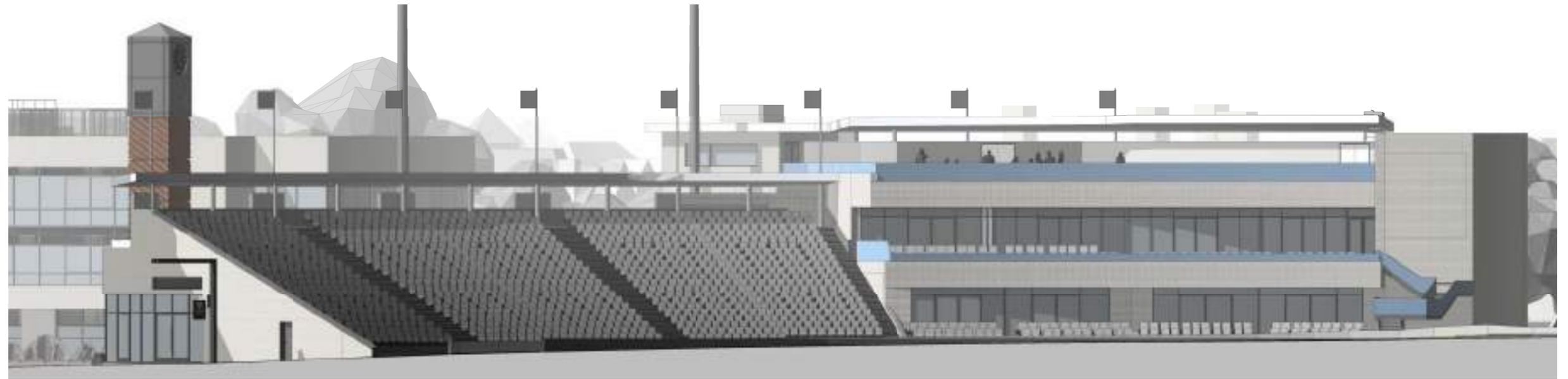




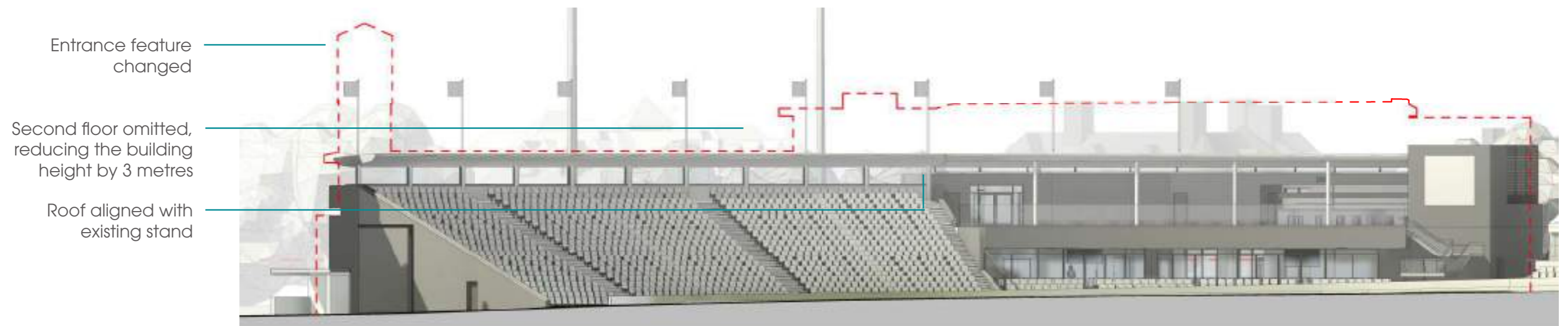
Design amendments^{2.0}

2.0 Design amendments

2.02 East elevation - Approved & Proposed



East elevation - Approved scheme

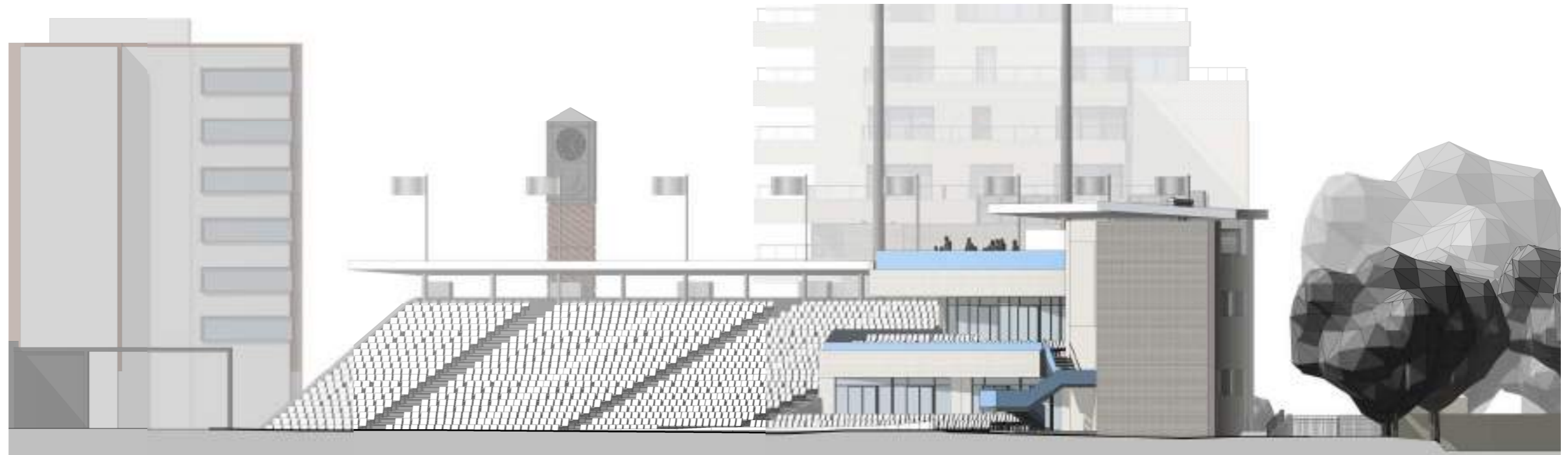


East elevation - Proposed scheme

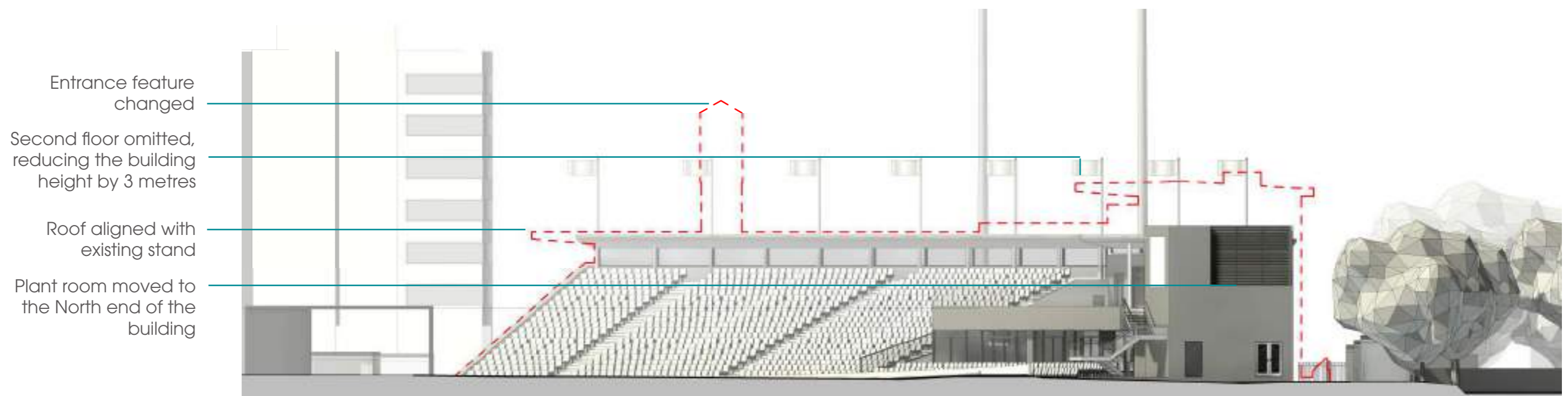
----- Outline of approved scheme

2.0 Design amendments

2.03 North elevation - Approved & Proposed



North elevation - Approved scheme



North elevation - Proposed scheme

----- Outline of approved scheme

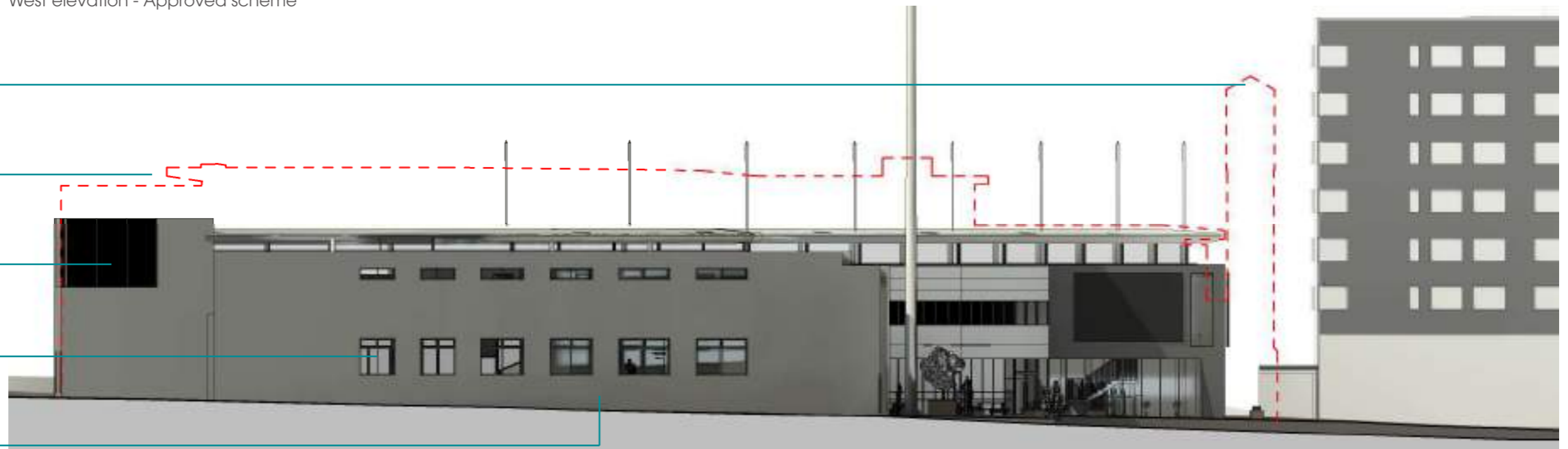
2.0 Design amendments

2.04 West elevation - Approved & Proposed



West elevation - Approved scheme

- Entrance feature changed
- Second floor omitted, reducing the building height by 3 metres
- Plant room moved to the North end of the building
- Window size reduced to a size matching the Phase 1 building
- External ramp omitted



West elevation - Proposed scheme

--- Outline of approved scheme

2.0 Design amendments

2.05 Visuals



Approved Phase 2 view from the cricket field, looking West



Proposed amended Phase 2 view from the cricket field, looking West



2.0 Design amendments

2.06 Visuals



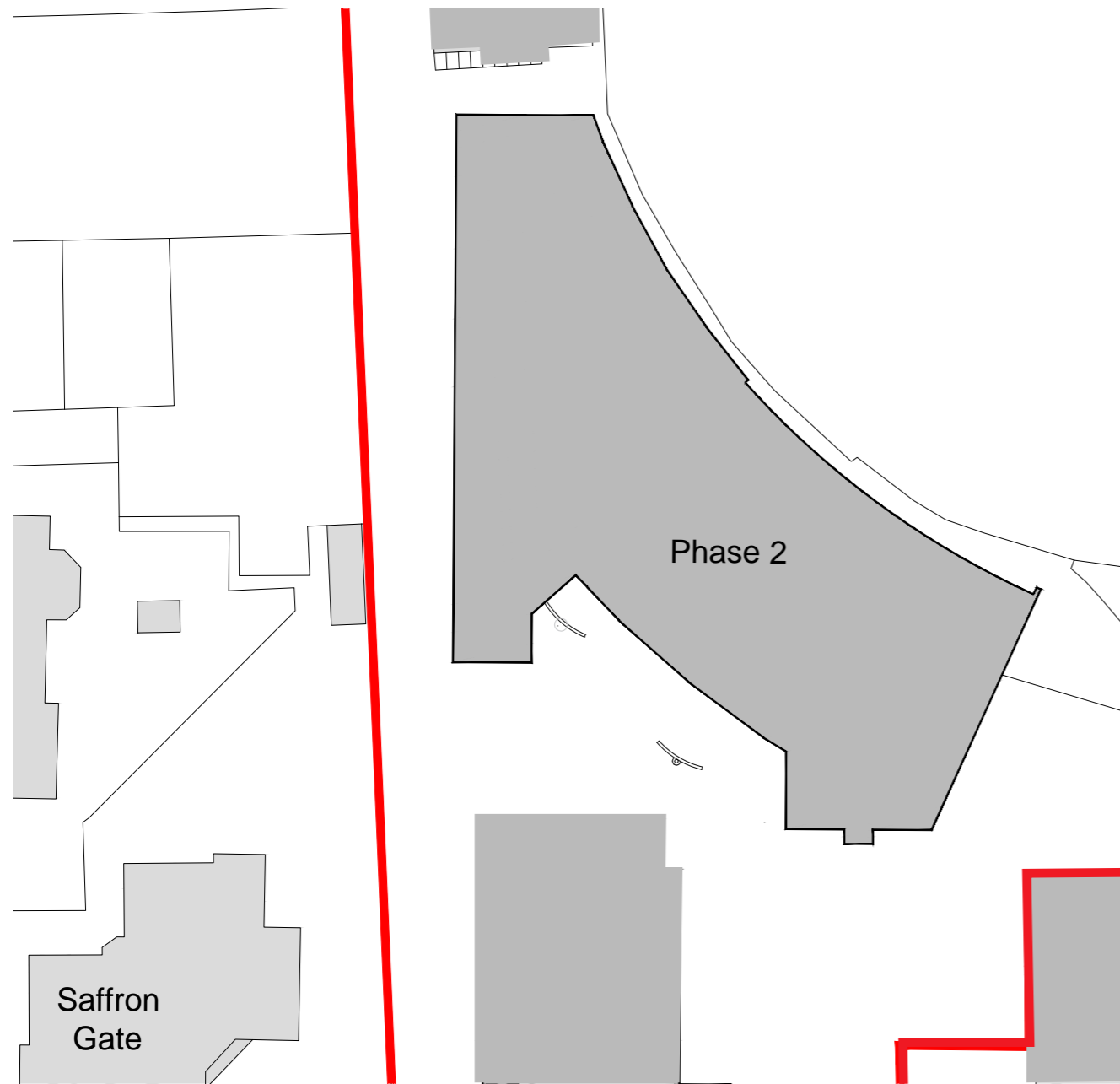
Approved Phase 2 view from the cricket field, looking South



Proposed amended Phase 2 view from the cricket field, looking South

2.0 Design amendments

2.07 Site plan



Site plan - Approved scheme

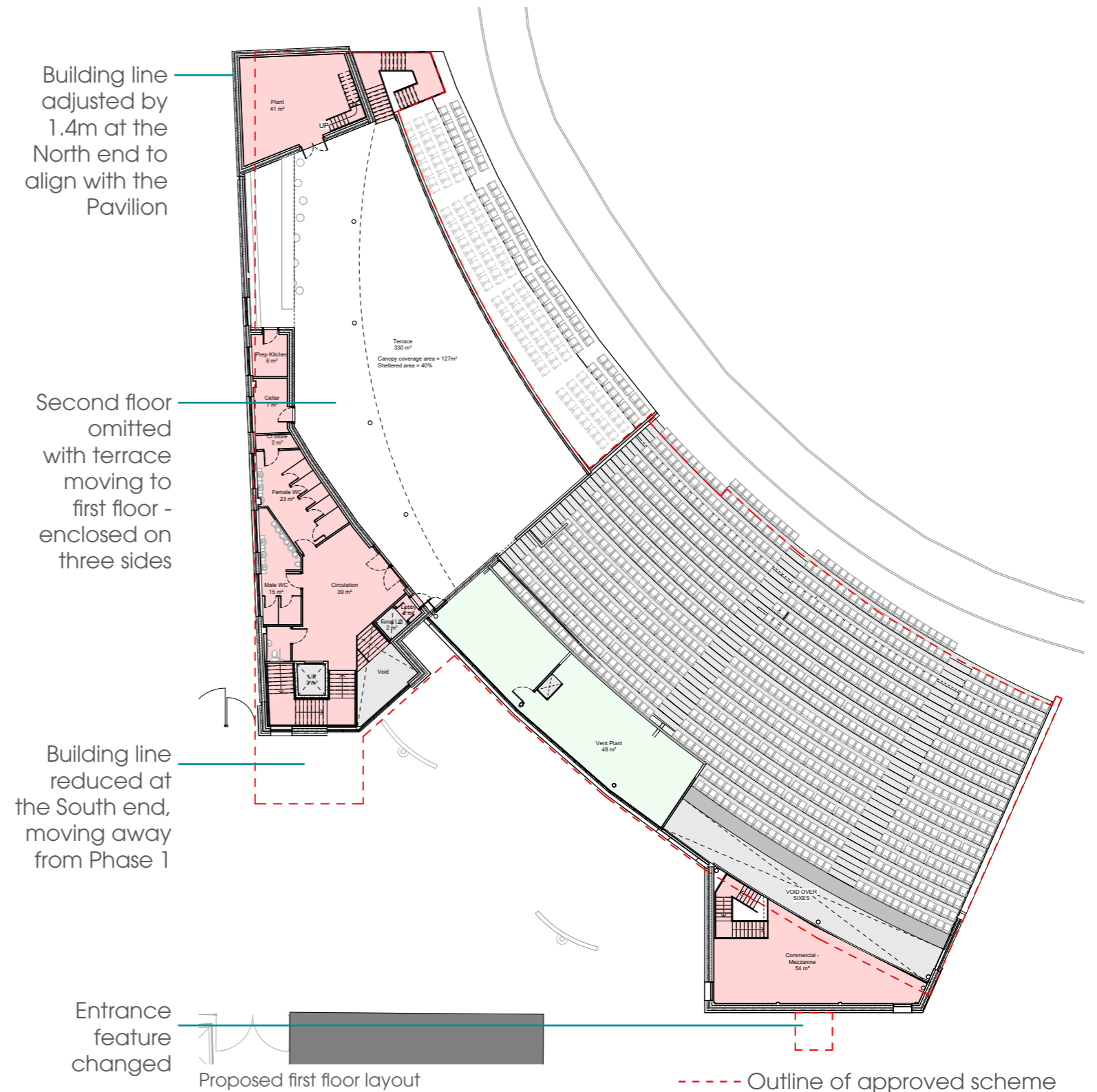
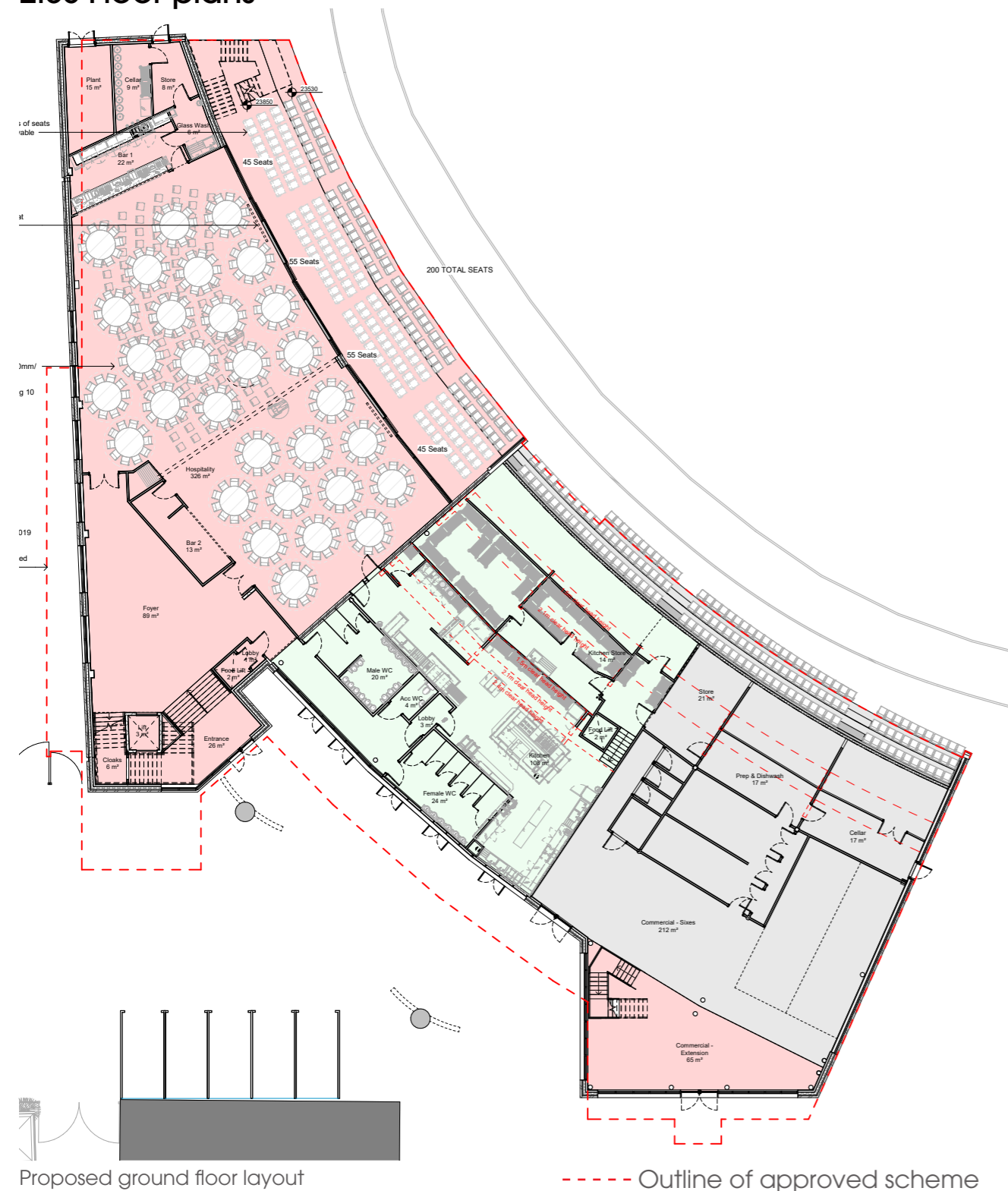


Site plan - Proposed scheme



2.0 Design amendments

2.08 Floor plans





3.0 Entrance

3.0 Entrance

3.01 Entrance view



Change to entrance feature. Clock tower replaced with a two storey feature referencing material palette used in Phase 1. LED welcome & wayfinding screen to move visitors away from the site entrance

3.0 Entrance

3.02 Arrival view



White brick and green
copper cladding
referencing Phase 1
building

Soft
landscaping

LED welcome
and wayfinding
screen



3.0 Entrance

3.03 Fan zone view



Continuation of material palette to hospitality entrance

Matchday soft landscaping

LED screen serving the fan zone on matchdays - live stream and scoreboard



3.0 Entrance

3.04 LED screens

South facing screen

- Wayfinding, welcome, advertising
- Restricted hours of use
- Viewing cone restricted through louvres on the screen



South facing screen - view from Eaton Road

West facing screen

- Important part of fan experience
- Fan zone - live match feed, scoreboard
- Primarily matchday only use - restricted hours of use



West facing screen - view from Wilbury Road



4.0 Programme



4.0 Programme

4.01 Masterplan programme





5.0 Contact



5.0 Contact

5.01 Questions and feedback



Doug Stewart

Head of Community Engagement and Social Impact
ECE Impact

Today's presentation is also accessible online on the Sussex Cricket website at the following link:

www.sussexcricket.co.uk/vision-sussex-cricket

If you have any further feedback, please e-mail Doug Stewart by **Friday 12th December**:

DStewart@ecearchitecture.com

Contact



Creativity. Quality. Commerciality.
Reimagine what's possible.